

Figure 1

REPORTING REQUIREMENTS FOR GHG EMITTERS BASED ON FINAL RULE, published September 22, 2009

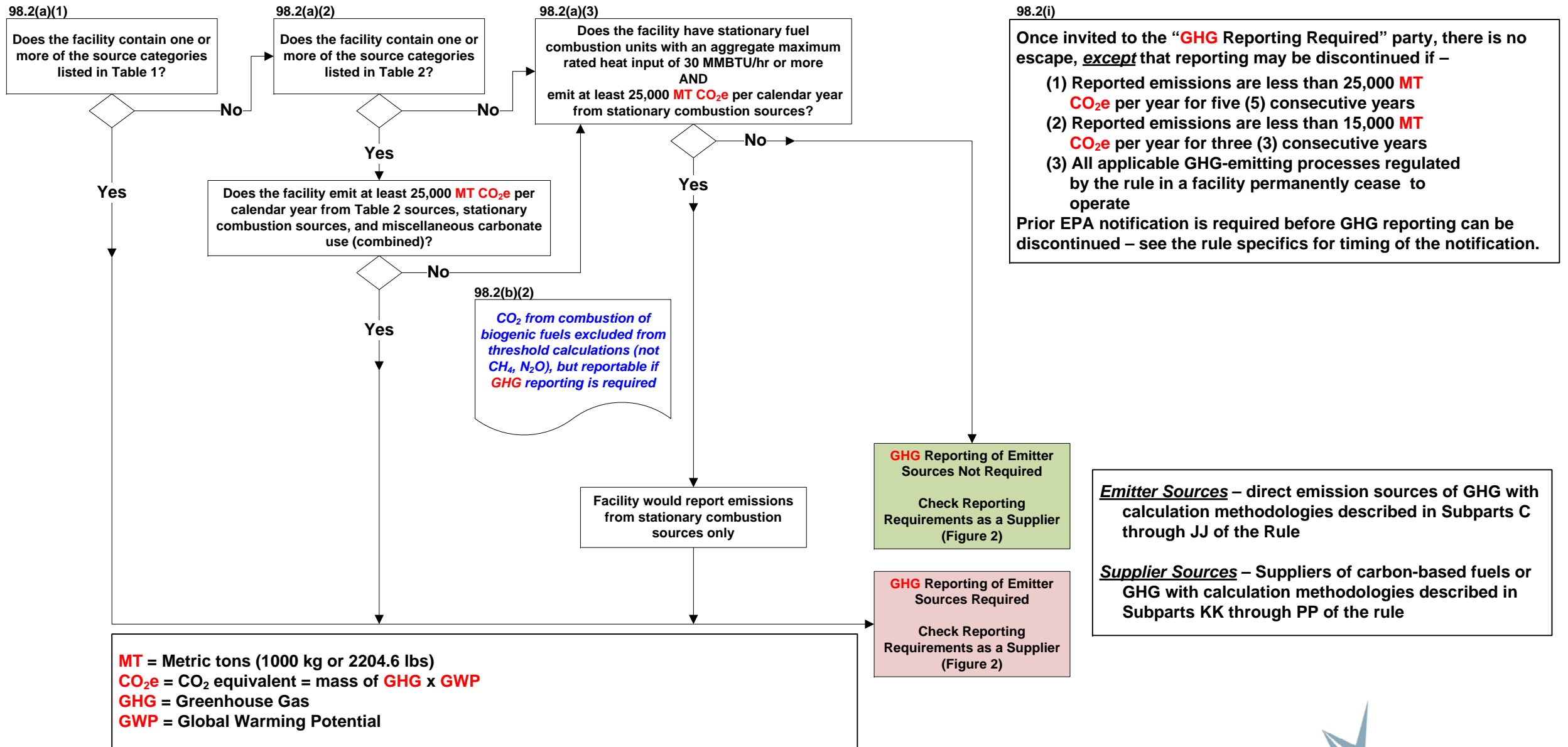


Table 1

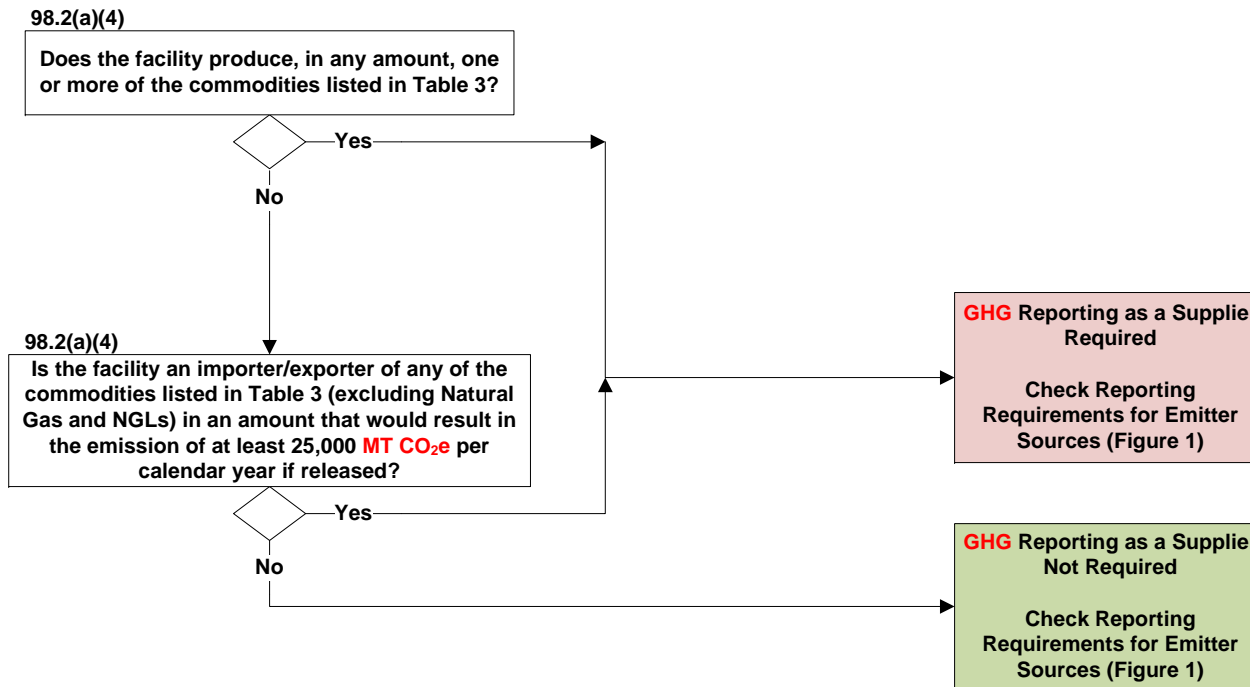
- (i) **Electricity generating facilities** that are subject to the Acid Rain Program, or that contain electric generating units that collectively emit 25,000 metric tons CO₂e or more per year
- (ii) **Adipic acid production**
- (iii) **Aluminum production**
- (iv) **Ammonia manufacturing**
- (v) **Cement production**
- (vi) **HCFC-22 production**
- (vii) **HFC-23 destruction** processes that are not collocated with a HCFC-22 production facility and that destroy more than 2.14 metric tons of HFC-23 per year
- (viii) **Lime manufacturing**
- (ix) **Nitric acid production**
- (x) **Petrochemical production**
- (xi) **Petroleum refineries**
- (xii) **Phosphoric acid production**
- (xiii) **Silicon carbide production**
- (xiv) **Soda ash production**
- (xv) **Titanium dioxide production**
- (xvi) **Municipal landfills** that generate CH₄ in amounts equivalent to 25,000 metric tons CO₂e or more per year
- (xvii) **Manure management systems** that emit CH₄ and N₂O in amounts equivalent to 25,000 metric tons CO₂e or more per year

Table 2

- (i) **Ferroalloy Production**
- (ii) **Glass Production**
- (iii) **Hydrogen Production**
- (iv) **Iron and Steel Production**
- (v) **Lead Production**
- (vi) **Pulp and Paper Manufacturing**
- (vii) **Zinc Production**

Figure 2

REPORTING REQUIREMENTS FOR GHG SUPPLIERS BASED ON FINAL RULE, published September 22, 2009



Emitter Sources – direct emission sources of GHG with calculation methodologies described in Subparts C through JJ of the Rule

Supplier Sources – Suppliers of carbon-based fuels or GHG with calculation methodologies described in Subparts KK through PP of the rule

MT = Metric tons (1000 kg or 2204.6 lbs)
CO₂e = CO₂ equivalent = mass of **GHG** x **GWP**
GHG = Greenhouse Gas
GWP = Global Warming Potential
NGL = Natural Gas Liquid
Supplier = producer, importer, or exporter of finished products
 Does not include oil and gas upstream production but does include plants that fractionate and supply propane, butane, and other constituent products. Natural gas is reported by local distribution companies, not upstream or midstream gas plants.

98.2(i)

Once invited to the “GHG Reporting Required” party, there is no escape, *except* that reporting may be discontinued if –

- (1) Reported emissions are less than 25,000 MT CO₂e per year for five (5) consecutive years
- (2) Reported emissions are less than 15,000 MT CO₂e per year for three (3) consecutive years
- (3) All applicable GHG-emitting processes regulated by the rule in a facility permanently cease to operate

Prior EPA notification is required before GHG reporting can be discontinued – see the rule specifics for timing of the notification.

Table 3

- (i) **Coal-to-Liquid Products (e.g., by Fischer-Tropsch or direct liquefaction)**
- (ii) **Petroleum Products from Refining**
- (iii) **Natural Gas Distribution to End Users, does not include:**
 - a. Upstream natural gas production
 - b. Midstream natural gas compression and transmission
- (iv) **Natural Gas Liquids by Fractionation (e.g., ethane, propane, butane, etc.). Does NOT include:**
 - a. Upstream field gathering and boosting stations
 - b. Plants that produce y-grade NGLs, but do not fractionate further into constituent finished products
 - c. Facilities that meet the definition of Refiners or Petrochemical Plants
- (v) **Fluorinated GHG or Nitrous Oxide (N₂O)**
- (vi) **Upstream Supply of Carbon Dioxide (CO₂), does not include:**
 - a. Storage of CO₂
 - b. Use of CO₂ in enhanced oil recovery
 - c. Transportation or distribution of CO₂
 - d. Purification, compression, or processing of CO₂
 - e. On-site use of CO₂ captured on-site
 - f. CO₂ transported in equipment such as fire extinguishers

